

Welcome to Brookland Infant and Nursery School



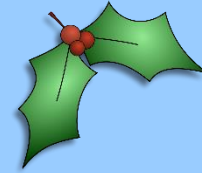
We are looking forward to showing you around our school. Please phone or email to make an appointment.

In the following slides we try to give you a flavour of our school's Early Years department.

If you have any questions please call us on 01992 629485 or email admin@brooklandinfants.herts.sch.uk

Reception

Holly Class



Mulberry Class

There are 2 reception classes and they are each staffed by a teacher and a teaching assistant

Applications for Reception Places

The application process for your child's
Reception place starts in the Autumn

Open from 1st Nov 2023 to 15th Jan 2024

Applications need to be made online at:

www.hertsdirect.org/admissions

Allocations are made by Hertfordshire
County Council.

Transition into our setting

Children's emotional well-being is of upmost importance to us so we place a very high value on the transition process to enable children to adjust to our school in a happy and secure way.



Getting to know you and your child

- We visit ALL new Reception children in their current setting.



- If they do not attend a setting then we will arrange to visit them at home.



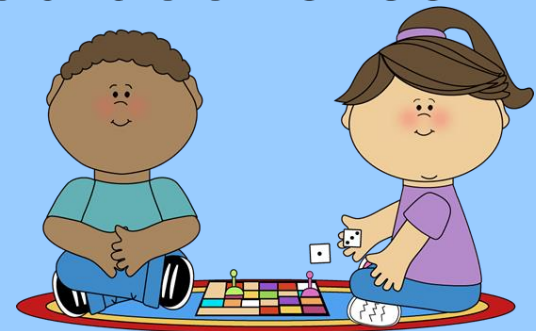
Transition

Stay & Play

- Parents and children are invited to 2 Stay & Play sessions of 1 hour each



- Stay with your child to play in their new classroom, experience the outdoor area and meet staff



Transition

- Children already in our nursery will have opportunities to visit their new class during their time at nursery
- Children from other settings are invited to visit their new class for a morning in July



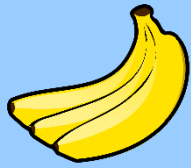
-

Transition

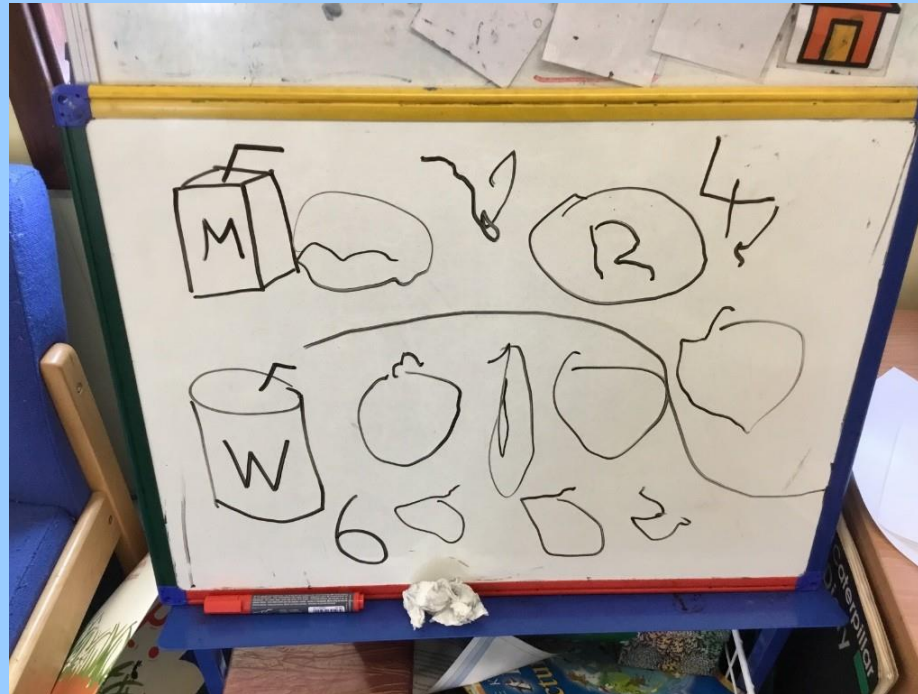
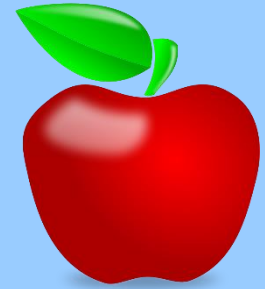


Parent Information Workshop

- At the beginning of September when children start our school, parents are invited to an Information Workshop while their children are visiting their class.



Snack Time



- Milk or Water
- Fruit and vegetables to try
- Opportunities to chat and learn



Lunchtime

- All the Reception children eat their lunch in the dining room in their class group
- Children are supported while collecting their lunch from the hatch
- The children are encouraged to eat and try foods



Reception Groups



- Children are placed in Teams
- Each team is a mixed group of boys and girls of different skills and abilities
- Teams are organised to best support children's concentration so they are frequently not placed with their closest friends.
- Teams are numbered 1-5 with 6 children in each.

Learning Environment



Inside and outside environment

The environment is set up both indoors and outdoors. Children learn to access and tidy up everything they have used independently.

Our Aims

- We have a good range of resources across our early years (both nursery and reception) to support children's learning and they are regularly updated and refreshed.
- Children are encouraged to develop lively and inquiring minds. We aim to develop confidence, independence and self-discipline and to help the children to reach their full potential. We encourage mutual respect between adults and children in our community.

Teaching & Learning

Learning in the EYFS happens in a variety of different ways.

- **ChIL - Child Initiated Learning** (*learning through play*)

- ✓ Self-chosen activities
- ✓ Inside or outside whatever the weather!

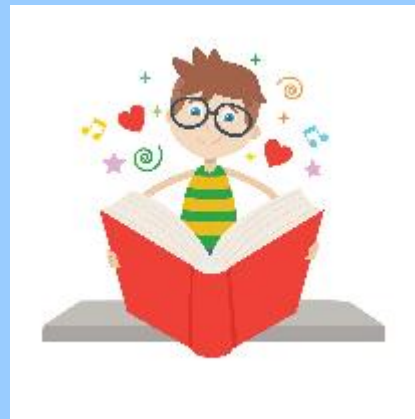


- **Adult directed activities**

- ✓ Small group learning
- ✓ Individual learning tasks
- ✓ Whole class activities

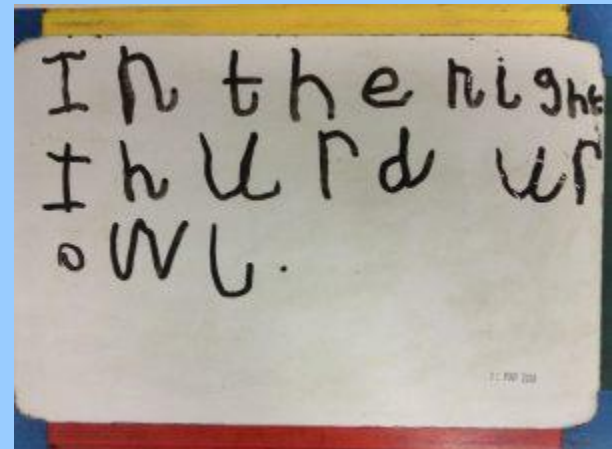
Phonics in Reception

- Daily sessions are vitally important to support children in learning to read and write.
- Partnership with parents and **daily practise** at home is also vital.
- We teach reading and writing through a synthetic phonic programme called Bug Club
- This links seamlessly with the reading books that will be sent home.



Literacy

- In reception children use their taught sounds to read and write words/sentences that are phonetically plausible with some words spelt correctly (high frequency words)



First Hand Experiences



Children are very interested in and excited by what's real.
As a result they maximise their learning potential when engaging in first hand experiences. We try to provide many and varied first hand experiences.

Developing gross motor skills:

Gross motor skills e.g. running, hopping, climbing, balancing, jumping, throwing, catching etc.

Developing fine motor skills:

Fine motor skills e.g. threading, cutting, pouring, scooping, opening & closing locks/lids, zips, pencil grip etc.



Early Years Garden

- We are very proud of our well-resourced outside area which our nursery and reception classes share
- There is a running area, boat, climbing frame, hill, mud kitchen, sunken sand pit, bricks, bicycles and more



PE/Sport

- PE sessions are delivered by a PE Specialist from GC Sport with each class having a session of PE every week.

During PE sessions reception children focus on a variety of different activities & skills as detailed in our PE scheme and in line with the Early Years Framework.

Here they can be seen learning how to travel, jump and land on apparatus.



Forest School

We are very lucky to have our own private secure woodland area.

Forest School aims to help children:

- Build self-esteem & confidence
- Become independent learners
- Stay safe & establish own boundaries for risk taking
- Show creativity, innovation, motivation & problem solving
- Explore at their own pace
- Develop good communication & work as a team
- Develop love & respect for the outdoors and nature
- Encourage exploration & curiosity
- Encourage spatial awareness

And for children to have fun!



- From January 2024 Forest School sessions will be delivered by a Level 3 Forest School Leader from Be Free Forest School
- Children have free exploration time
- They learn about:
 - trees, plants, animals and minibeads in our forest
 - Animal and minibead homes and habitats
 - Den building
 - How to tie knots
 - How to safely use forest school tools
 - Using natural materials to build and make crafts
 - Fire rules and fire safety
 - Map making
- At the end of the session they come back together as a group to discuss their discoveries, creations and listen to a story

Our forest school classroom is well resourced with magnifying glasses, binoculars, compasses, inspection pots, spotter sheets, information books and much more



Assessment & Record Keeping

- Assessments are made of your child's learning throughout the day through their play and in adult directed learning
- Photographs, jotted notes, formal observations, samples of child's "work" are all part of the assessment process.
- We aim to support the children to be working within Age Related Expectations (or beyond) as detailed in the new EYFS curriculum guidance.

Thank-you
for looking through our
presentation

We hope
we get to meet you soon

If you have any questions please:



01992 629485 or

Email: admin@brooklandinfants.herts.sch.uk