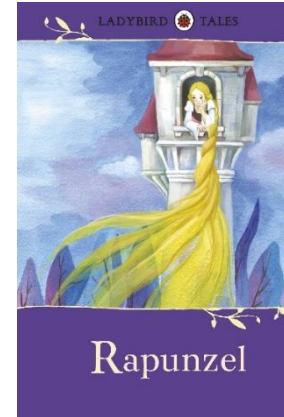


Spring 1 - Year 2

Fairy tales



Over the next half term, our learning will be based on Fairy tales! In particular, we will focus on different versions of the story Rapunzel. We will look at the Ladybird edition as well as the versions written by Beth Woollvin and Chloe Perkins. In Science, our learning focus this half term will be investigating everyday materials.

Handwriting



We are continuing to practise the correct formation of letters, ensuring they are sitting on the line with clear distinction between ascenders and descenders.

Learning in the Core subjects

- During our English learning, we will be identifying the key features of fairy tales as well as using dialogue in our writing, analysing the characters and also using descriptive language. We will be looking deeper at using different sentence starters, choosing the correct tense throughout a piece of work and also re-reading and editing our own writing.
- In Maths, we will be revisiting problem solving including answering one-step & two-step word problems. We will also be focussing on measuring, specifically length & height. The children will learn about capacity, weights and temperature, learning to read a scale in intervals of 1, 2, 5 and 10.

Have you explored these Maths games...?

<https://www.gamestolearnenglish.com/telling-the-time/>

https://mathsframe.co.uk/en/resources/resource/118/adding_time_word_problems#

Maths Fluency

- Bonds to 20 & 100.
- Doubles & near Doubles
- Take away a 2-digit number from a 2 digit-number.
- Place value
- Placing numbers on to a numberline.

Phonics - Spelling Rules



The rule for adding suffixes -ing, -ed, -est, -er and -y to root words ending with the letter 'e' e.g. hope becomes hoping, close becomes closest, large becomes larger etc.

Using a possessive apostrophe e.g. George's coat was red.

Vocabulary & Focus Areas

Materials, suitability, properties of materials, Olympics, Beth Woollvin, research, symbols and actions, Fairy tales, compare, creation stories.

Remember...

- Remember to read the books that are sent home weekly & read bug club books online.
- Complete one piece of home learning each week on Purple Mash.
- It will be Forest School this half term so remember to wear the correct item of clothing!